

Access to KSU (Kyushu Sangyo University)

Kyushu Sangyo University (KSU) is conveniently located in Fukuoka City and is easily accessible by public transportation.

From Fukuoka Airport (International Terminal)

1. Take the **free shuttle bus** from the international terminal to the **domestic terminal**.
2. From the domestic terminal, take the **subway (Kūkō Line)** to **Hakata Station** (approx. 5 minutes).
3. At Hakata Station, transfer to the **JR Kagoshima Main Line**.
4. Board a **local train** bound for **Mojikō** or **Kokura**.
5. Get off at **Kyūsandaimae Station** (*Note: Rapid trains do not stop at this station*).
6. The university is just a short walk from the station.

Travel Time:

- From Fukuoka Airport to Kyūsandaimae Station: Approx. **30–40 minutes** total
- From Hakata Station to Kyūsandaimae Station: Approx. **14–19 minutes** by local train

From Tenjin

1. From **Tenjin Station**, take the **subway (Kūkō Line)** toward **Hakata** and get off at **Hakata Station** (approx. 5 minutes).
2. The following steps are the same as from Hakata.
3. Get off at **Kyūsandaimae Station**.
(*Note: Rapid trains do not stop at this station, so be sure to take a local train.*)
4. Kyushu Sangyo University is just a short walk from the station.

Total travel time: Approximately **25–35 minutes**.

* There is also a bus service from Tenjin, but for first-time visitors, we recommend using the train for easier navigation.

About the Train from Hakata

On the Kagoshima Main Line, there are both **local trains** (普通, “futsū”) and **rapid trains** (快速, “kaisoku”), and it’s important to know the difference:

1. Local Trains (Futsū)

Local trains stop at **every station** along the route. They are ideal for short-distance travel or when heading to smaller stations.

2. Rapid Trains (Kaisoku)

Rapid trains skip **some smaller stations** and only stop at major ones. They are faster than local trains and are good for medium- to long-distance travel.

How to Tell Them Apart:

- **Train Display:** The destination signs on the front and side of the train will say either “普通” (Local) or “快速” (Rapid).
- **Station Announcements:** Platform and onboard announcements (often in both Japanese and English) will tell you whether the train is local or rapid.
- **Timetable Color Codes:** In many timetables, different train types are shown in different colors. Local trains and rapid trains often have separate columns or markings.
- **Digital Boards:** At stations, electronic displays show the type of train, departure time, and the major stops. Look for the word “Rapid” or “Local.”

Important Note:

Even though rapid trains are faster, **they may not stop at your desired station**, so always check the stops before boarding.

From Kyūsandaimae Station to the University Campus

After getting off the train, use the **stairs or elevator** to go up to the **ticket gate on the 2nd floor**. Exit through the gate, then immediately take the **stairs on your left** down to the ground level.

Head **diagonally to the left**, and after about **30 meters**, **cross the railroad crossing**.

Just after crossing, you will see the **university entrance gate on your right**.

From the gate, it takes about **10~15minutes on foot** to reach **Building No. 3**, where the reception desk is located.

Please follow the **directional signs for the event** posted around campus as you walk.

Access to Hakata from the Fukuoka International Airport

If you arrive at the International Terminal of Fukuoka Airport, you need to take the free shuttle bus to the Domestic Terminal in order to access the subway.

The subway station is not directly connected to the International Terminal.

The free shuttle bus takes about 10 minutes and runs every 5–10 minutes.

By Subway

Take the Fukuoka City Subway Kūkō Line (Airport Line) from Fukuoka Airport Station.

Hakata Station is just 2 stops away and the ride takes about 5 minutes.

The fare is around 260 yen. Subway trains run frequently.

By Taxi

A taxi ride from the airport to Hakata Station takes about 15 minutes, depending on traffic.

The fare is approximately 1,500 to 2,000 yen.

Taxis are available at the airport's taxi stand.

Access to Tenjin from the Fukuoka International Airport

From the international terminal, take the free shuttle bus to the domestic terminal.

At the domestic terminal, enter the Fukuoka City Subway (Kūkō Line).

Take the subway bound for Meinohama and get off at Tenjin Station.

Travel time: Approximately 11 minutes from the domestic terminal to Tenjin.

Shuttle Bus Service from Designated Hotels to the University

A shuttle bus is operated between the following hotels and the university:

- Hotel Okura Fukuoka
- Nishitetsu Inn Fukuoka
- Nishitetsu Croom Hotel Hakata

Please note:

- Departure times are fixed and may vary by day.
- Check the timetable at your hotel's front desk after check-in.
- Please be at the designated pick-up point at least 5 minutes before departure.

Access to the Okura Hotel from the International Airport

1. From the international terminal, take the free shuttle bus to the domestic terminal.

2. At the domestic terminal, board the Fukuoka City Subway (Kūkō Line).

3. Take the subway *bound for Meinohama* and get off at Nakasu-Kawabata Station (about 9 minutes).

4. Take Exit 1, and the Hotel Okura Fukuoka is just a short walk from the station.

Total travel time: Approximately 20–25 minutes.

By Taxi

Travel Time: 20 to 30 minutes, depending on traffic conditions.

Cost: ¥2,000– ¥3,000

Access to the Nishitetsu-Inn Fukuoka from the International Airport

- 1.From the international terminal, take the free shuttle bus to the domestic terminal.
- 2.At the domestic terminal, board the Fukuoka City Subway (Kūkō Line).
- 3.Take the subway bound for Meinohama and get off at Tenjin Station (about 11 minutes).
- 4.From Tenjin Station, follow signs to the Nishitetsu Fukuoka (Tenjin) Station area.
- 5.The Nishitetsu Inn Fukuoka is about a 5-minute walk from Tenjin Station, near the Tenjin business district.

Total travel time: Approximately 25–30 minutes.

By Taxi

Travel Time: Approximately 10–15 minutes

Cost: ¥2,100–¥2,600

Access to the Nishitetsu Croom Hakata Hotel from the International Airport

- 1.From the international terminal, take the free shuttle bus to the domestic terminal.
- 2.At the domestic terminal, board the Fukuoka City Subway (Kūkō Line).
- 3.Take the subway bound for Meinohama and get off at Hakata Station (approx. 5 minutes).
- 4.Exit the subway and follow signs for the Hakata Exit (Chikushi Exit) of JR Hakata Station.
- 5.The Nishitetsu Croom Hakata Hotel is located about a 4-minute walk from the station.

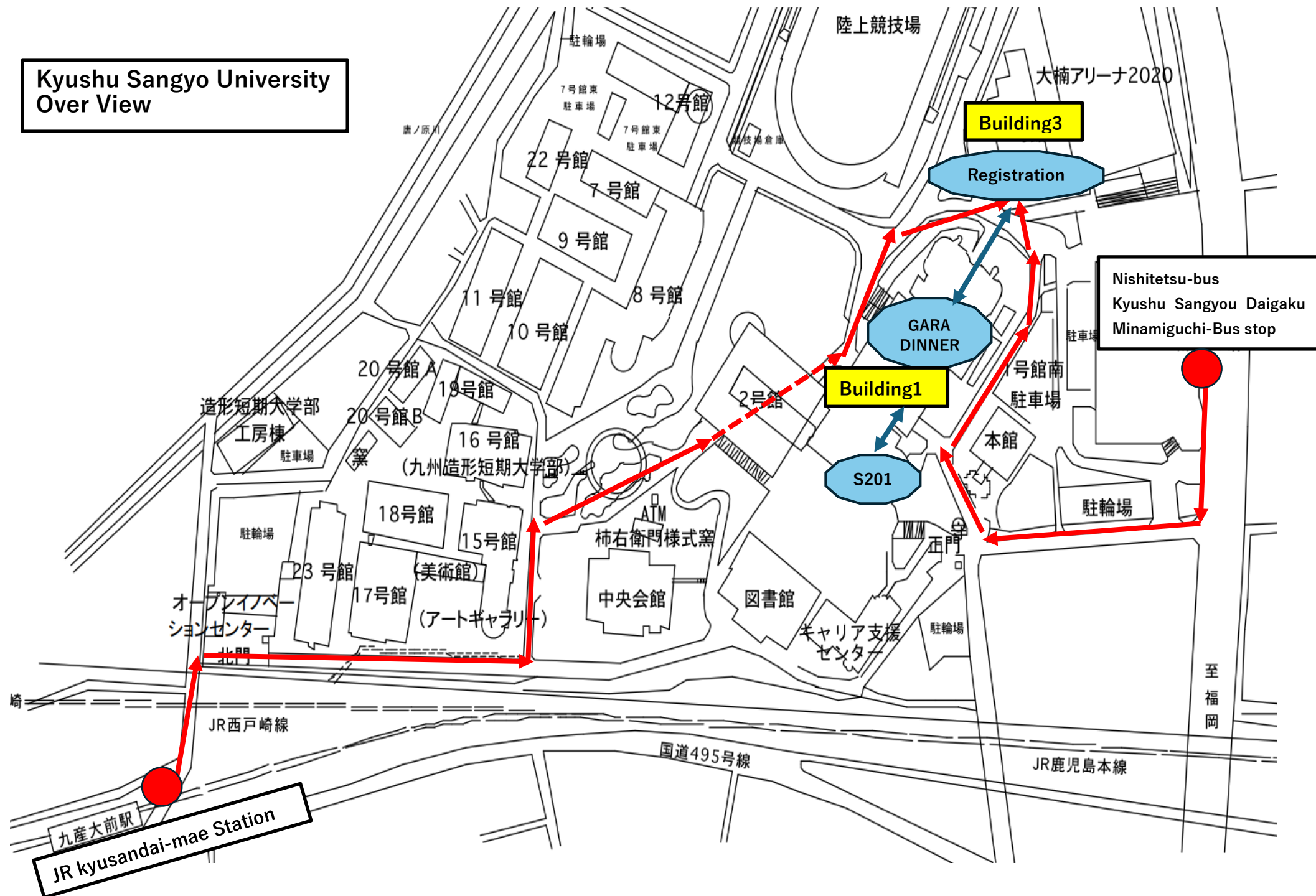
Total travel time: Approximately 20–25 minutes.

By Taxi

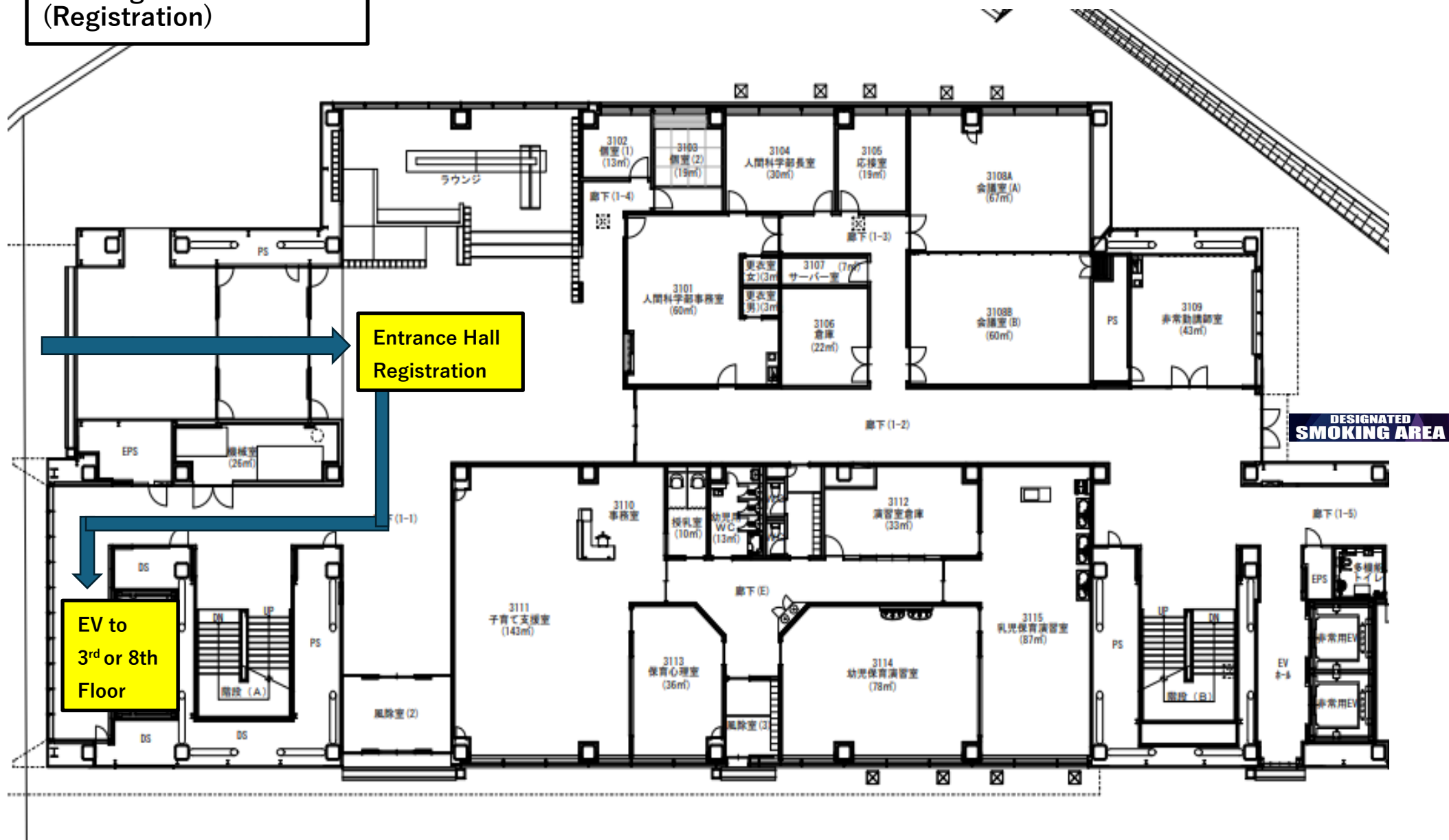
Travel Time:15–20 minutes

Cost:¥2,000–¥3,000

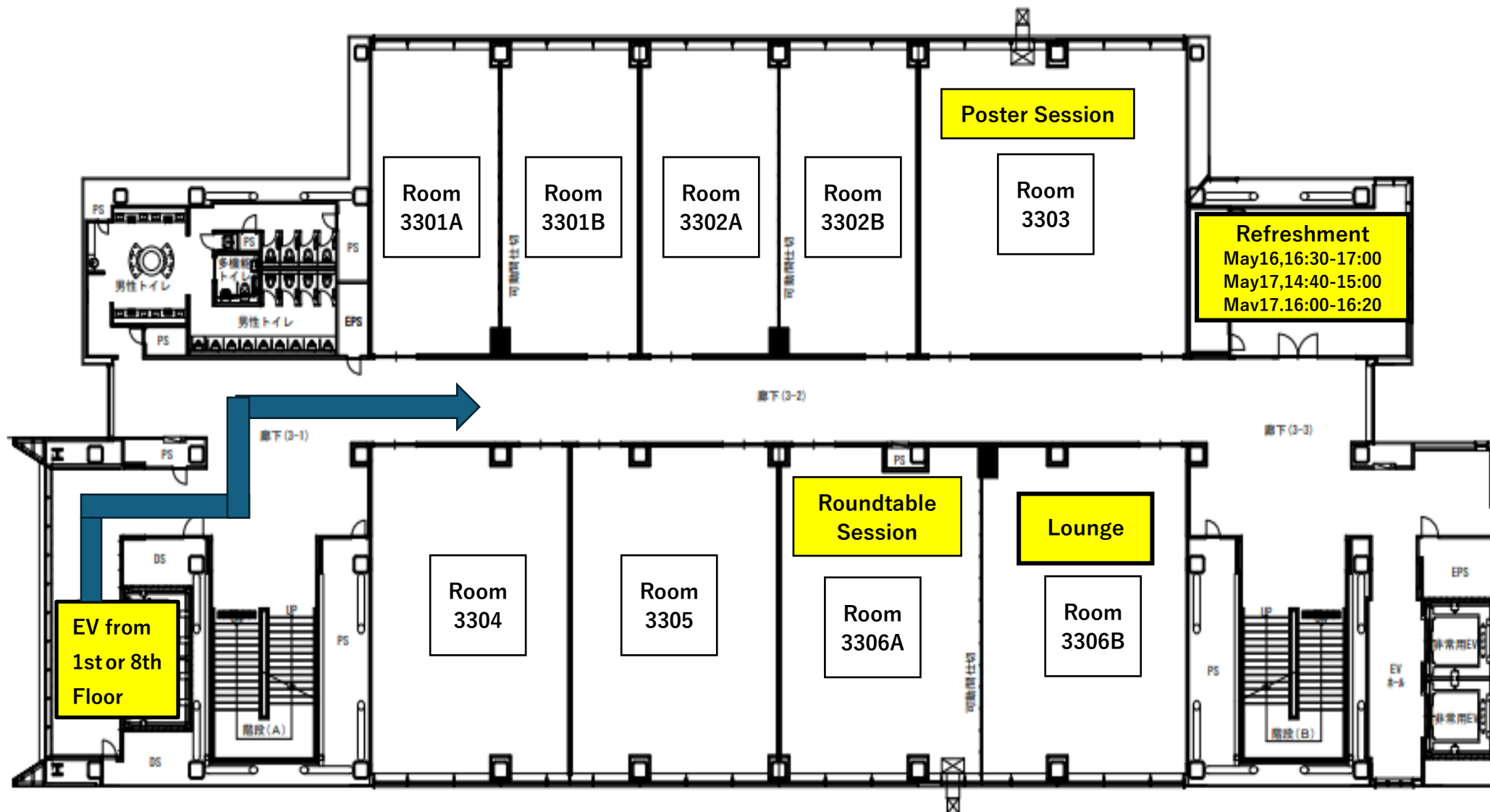
Kyushu Sangyo University Over View



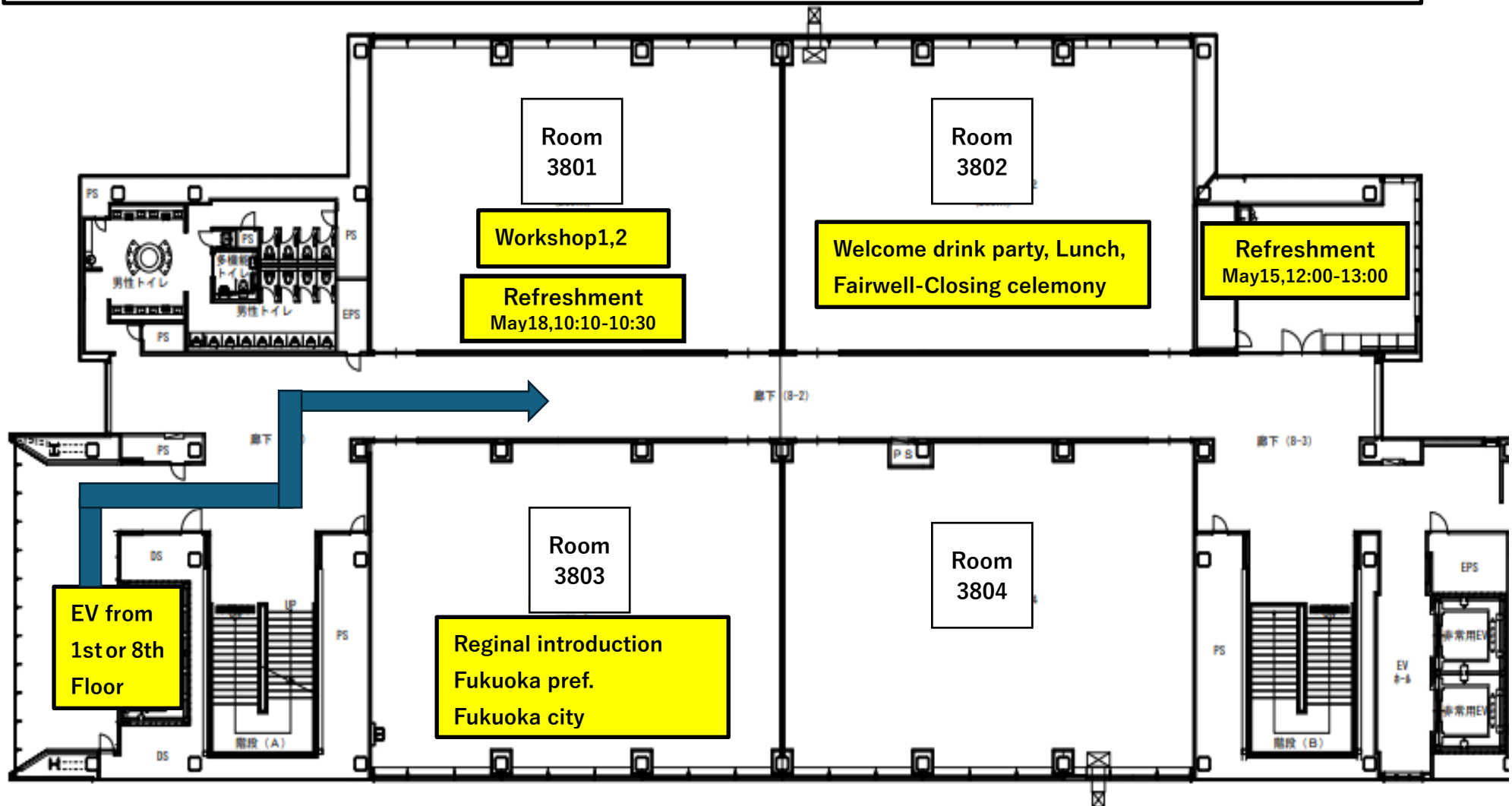
**Building 3 1st Floor
(Registration)**



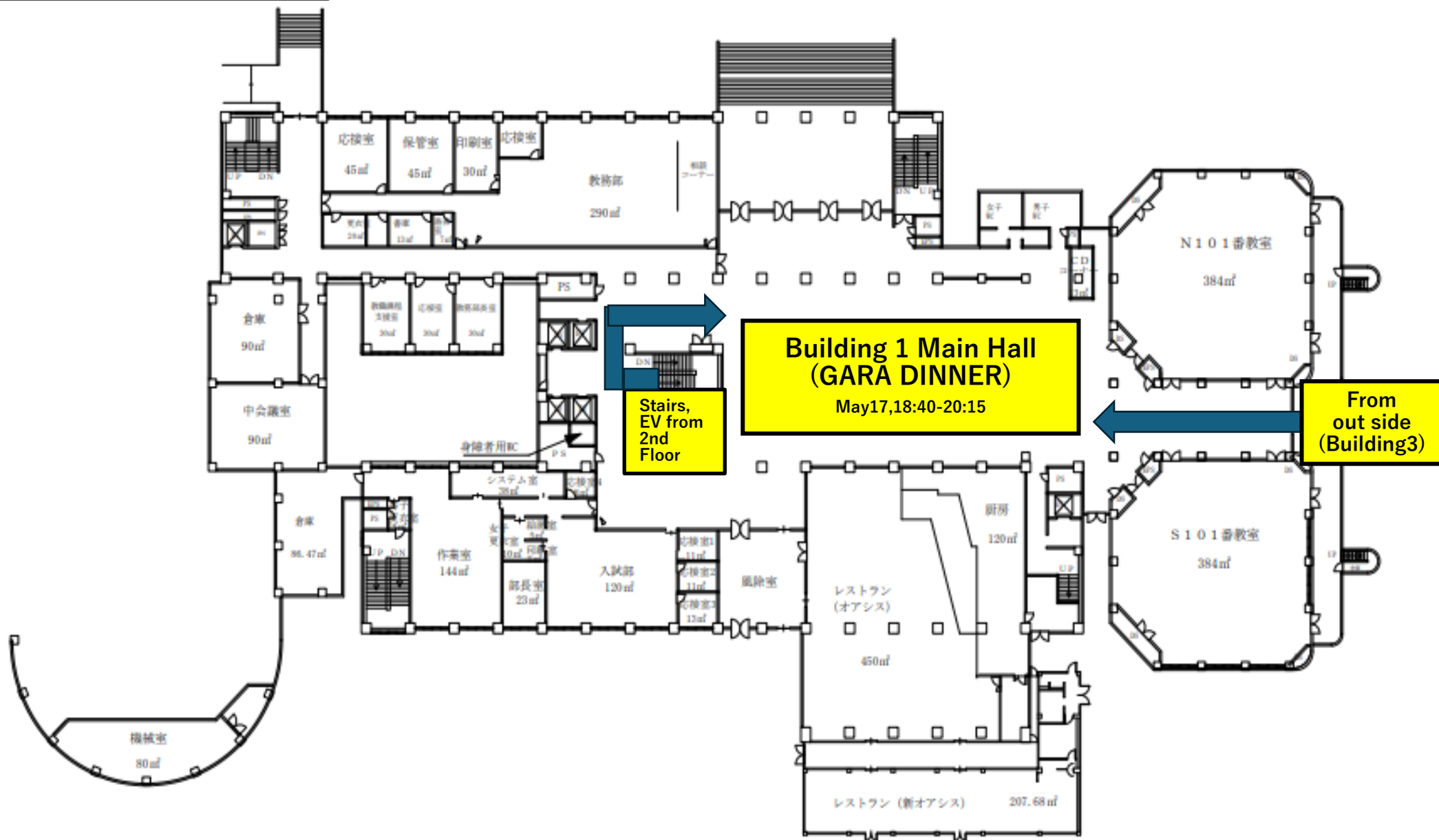
Building 3 3rd Floor
(Concurrent Session, Roundtable Session and Poster Session)



(Workshop, Welcome Drink Party, Lunch, Fairwell-Closing Celemony and Reginal introduction)



Building 1, 1st Floor
(GARA DINNER)



Building1 2nd Floor
(Opening Ceremony, Keynote Speech, Panel Session)

